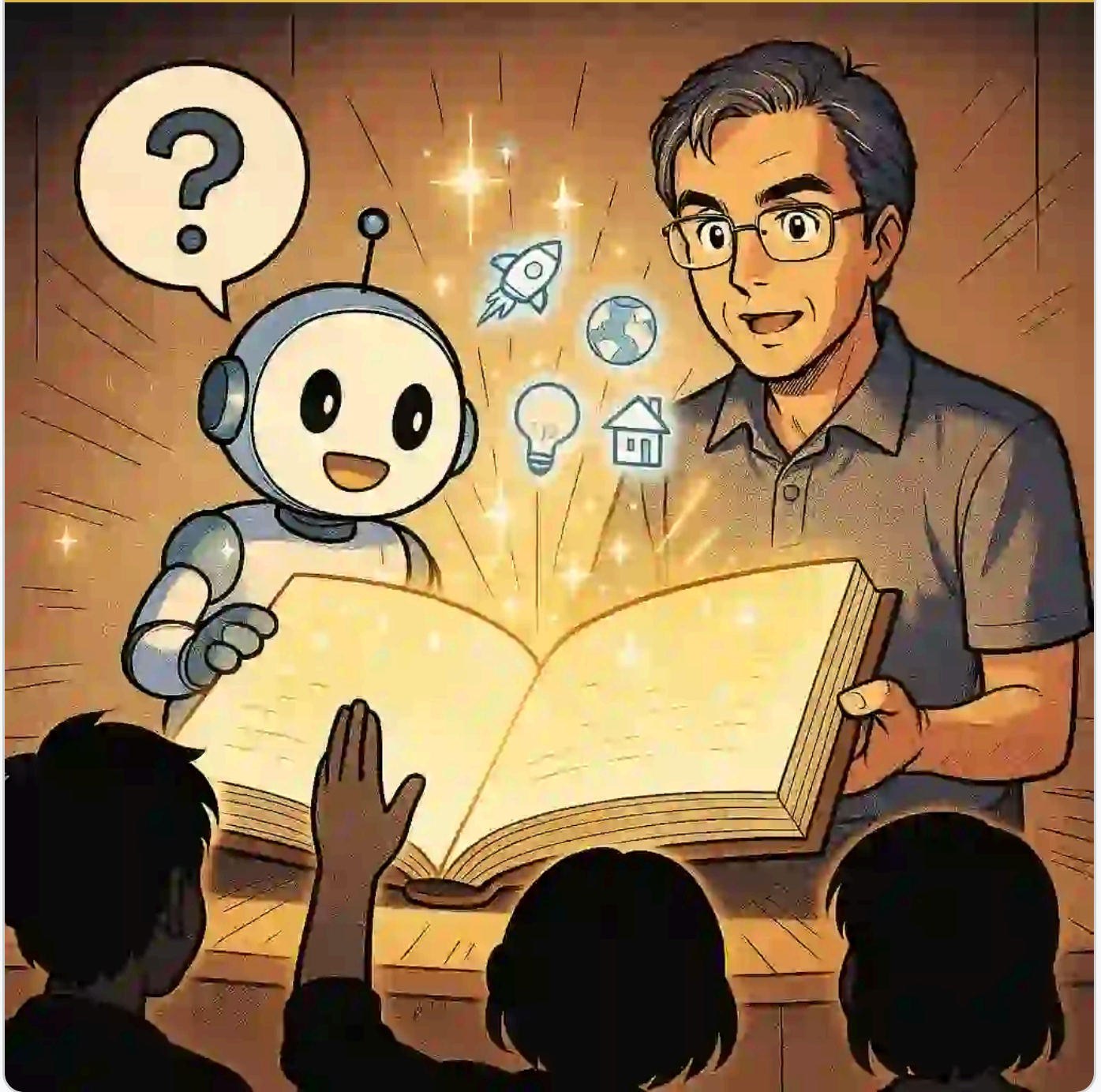
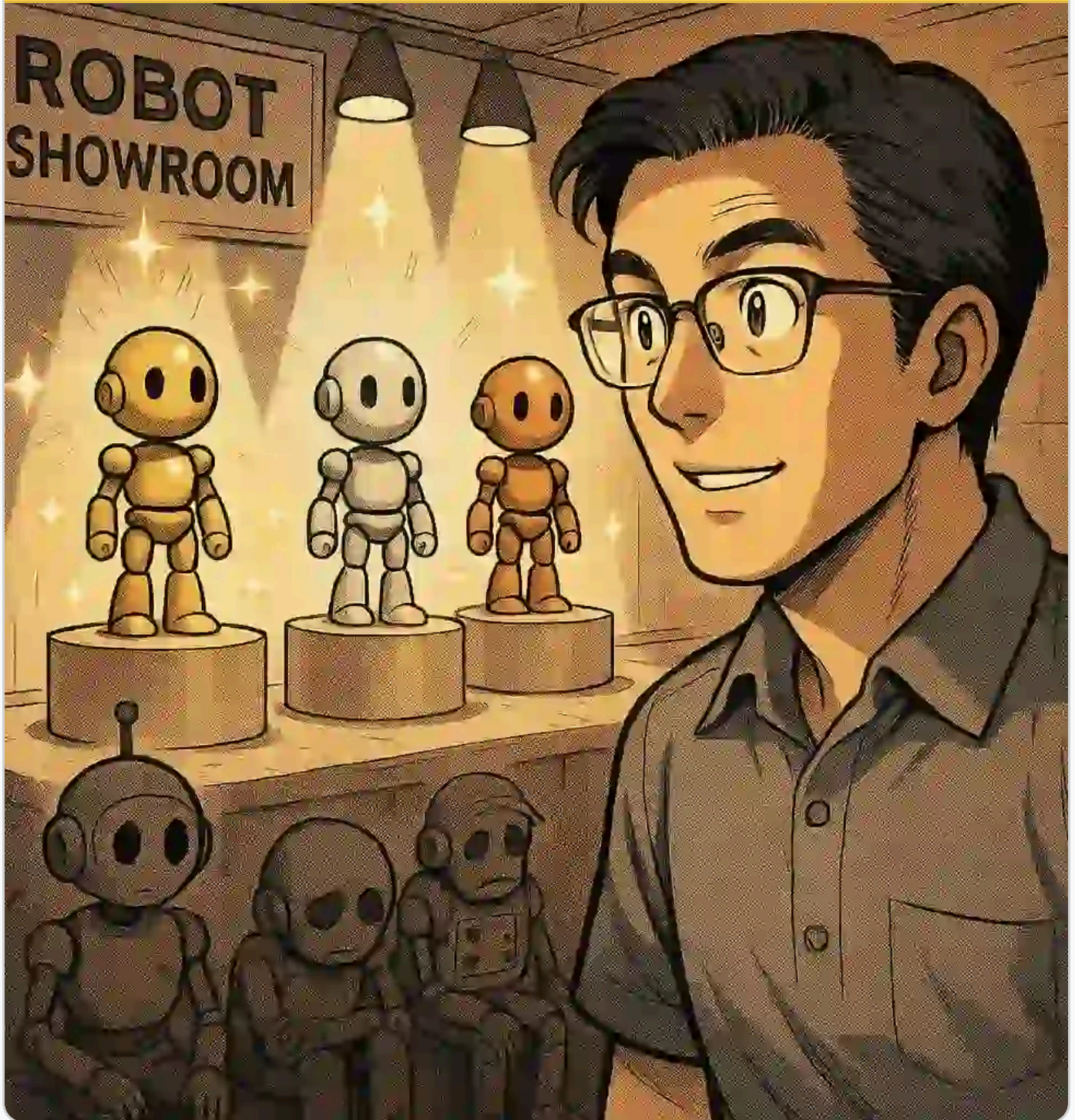


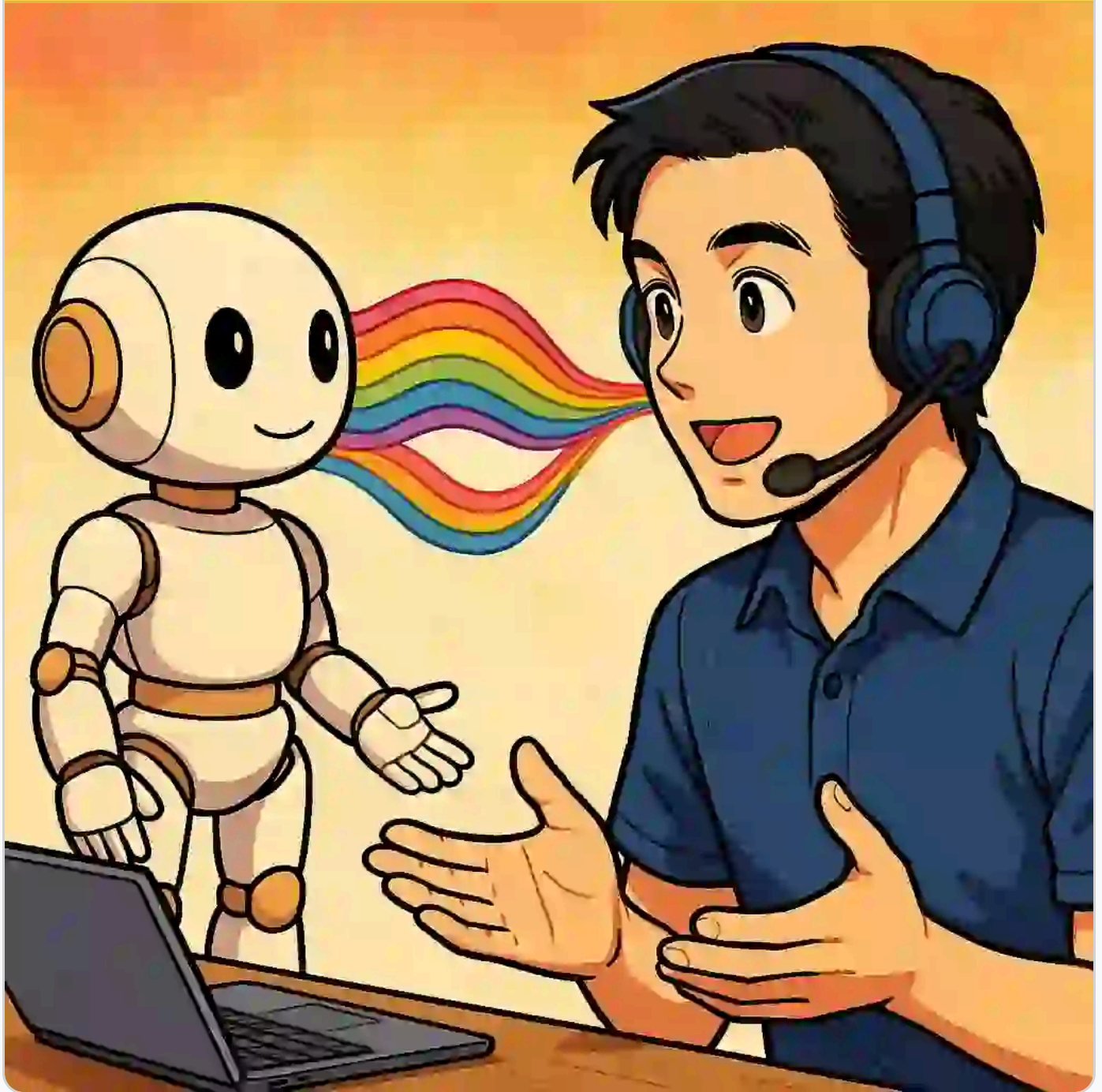
Here's how I answer "How do I use LLMs better".



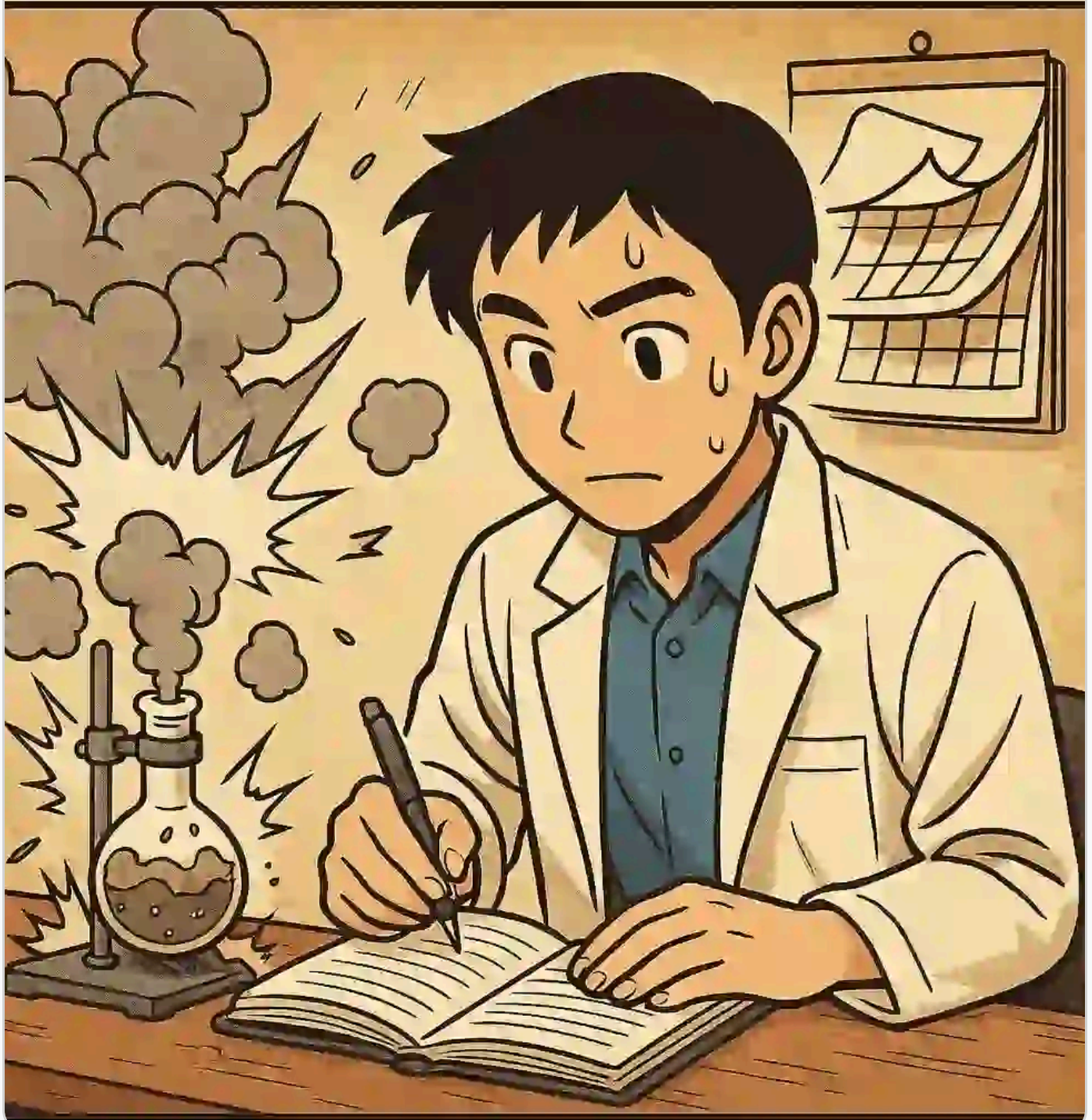
Use the best models. O3, Gemini 2.5 Pro,
Claude 4 Opus.



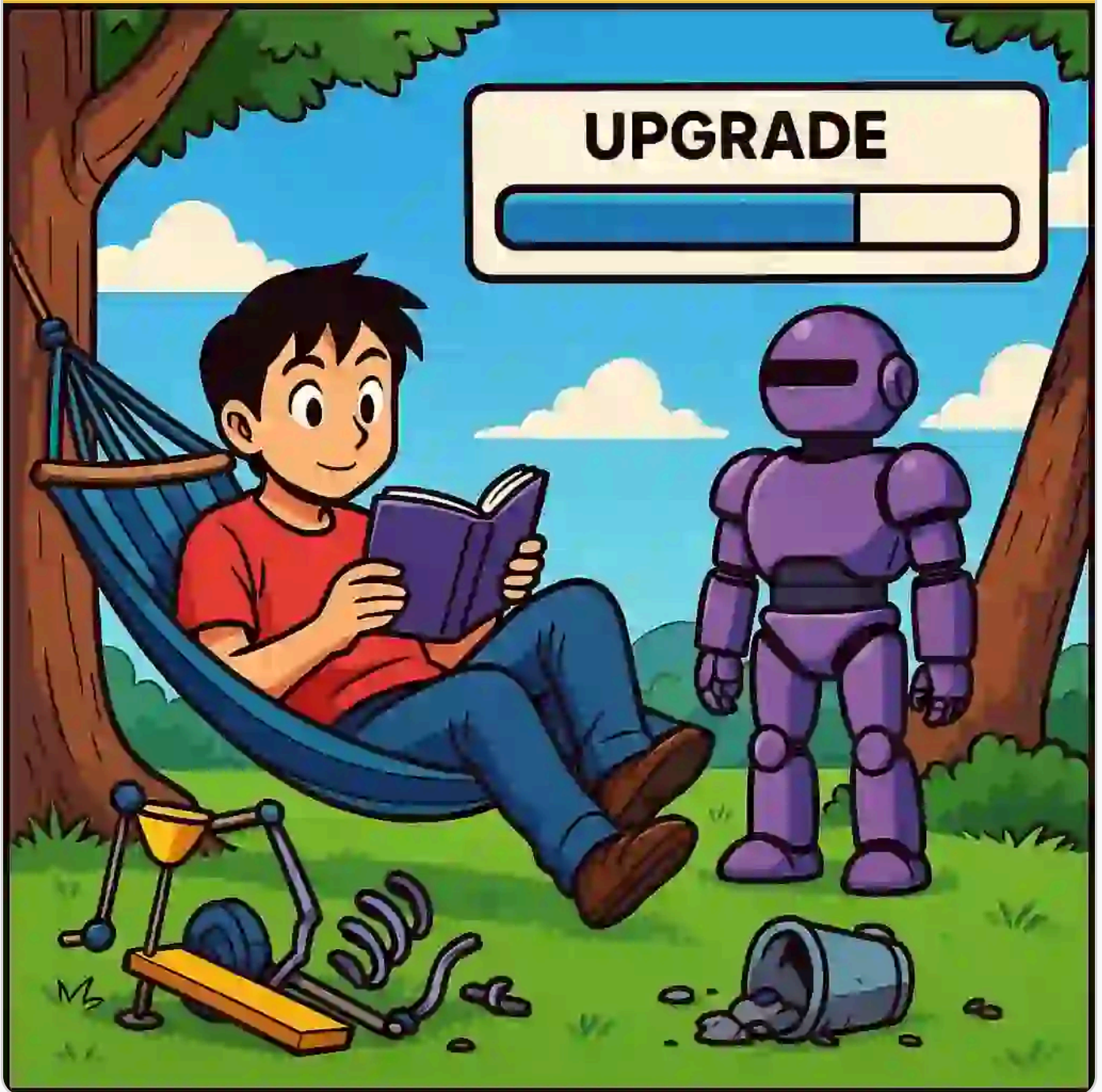
Use audio. Speak & listen, don't just type & read.



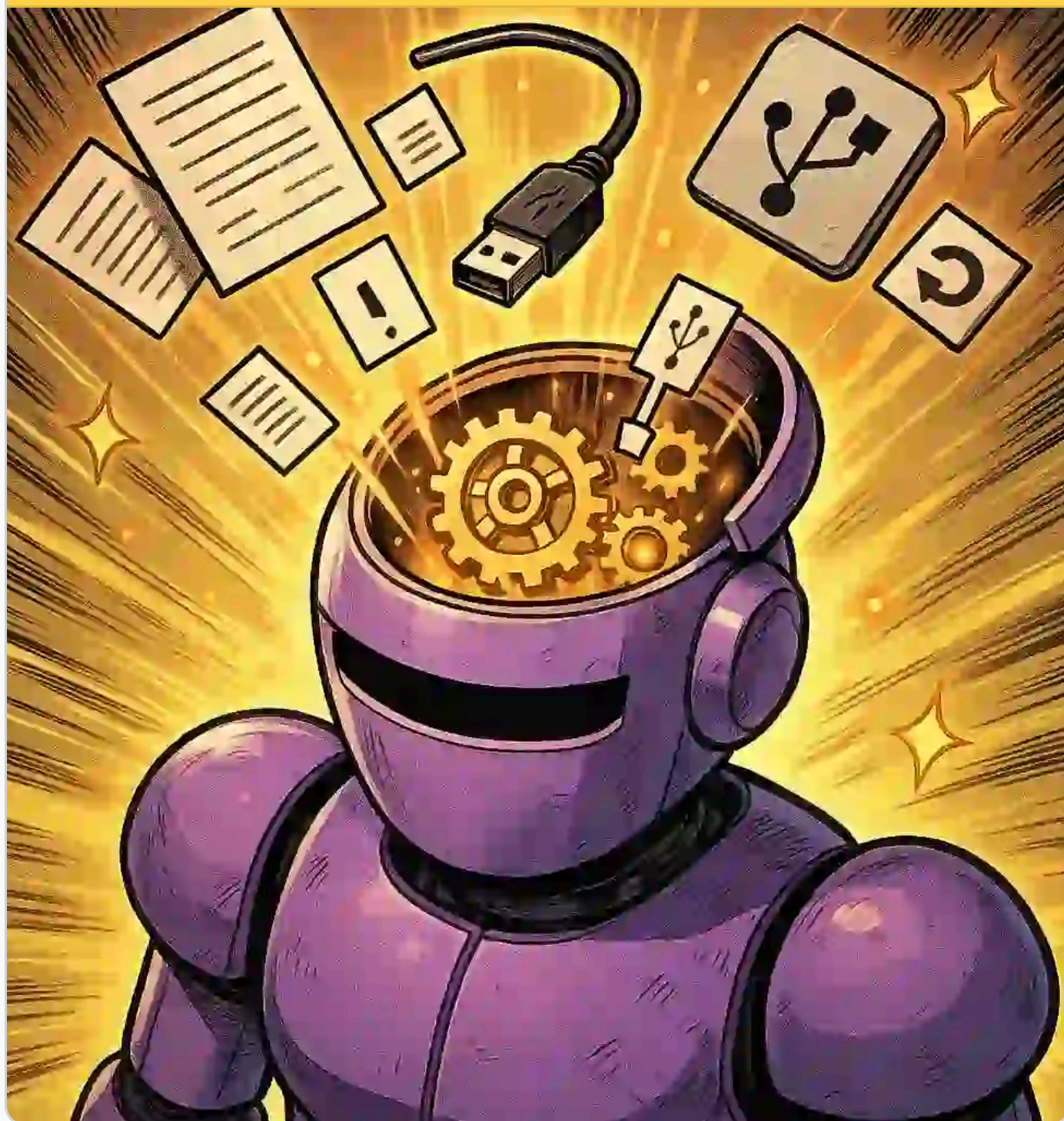
When it fails, WRITE it down. Try again next quarter.



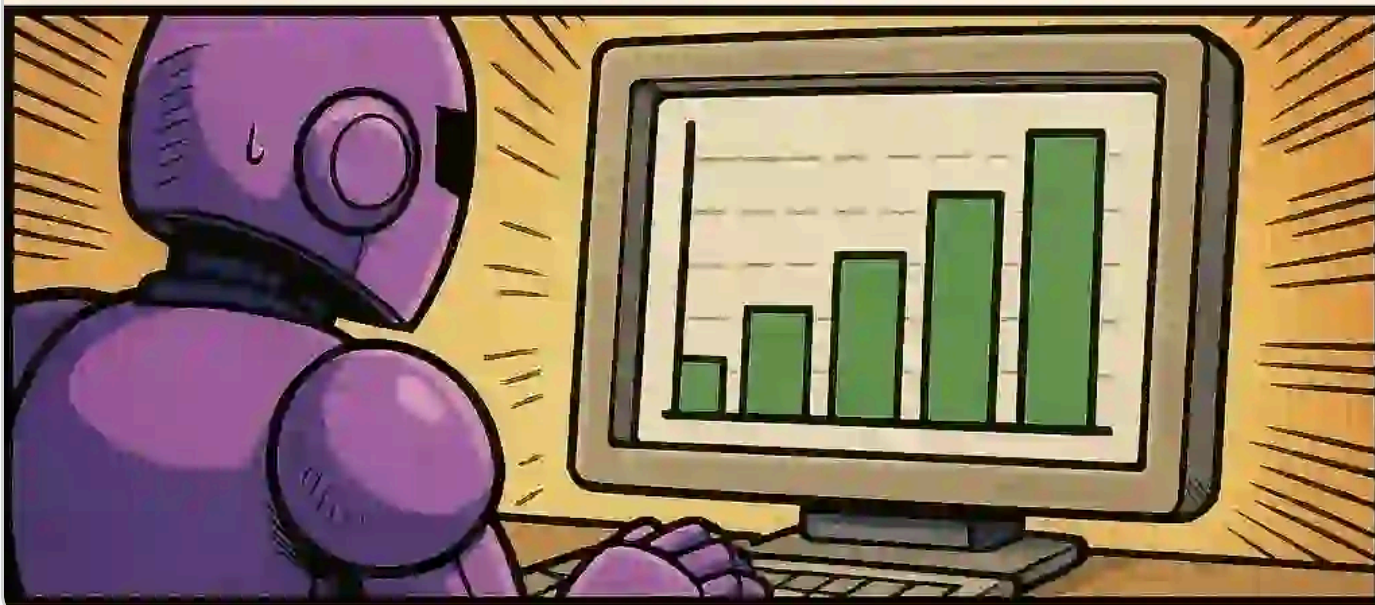
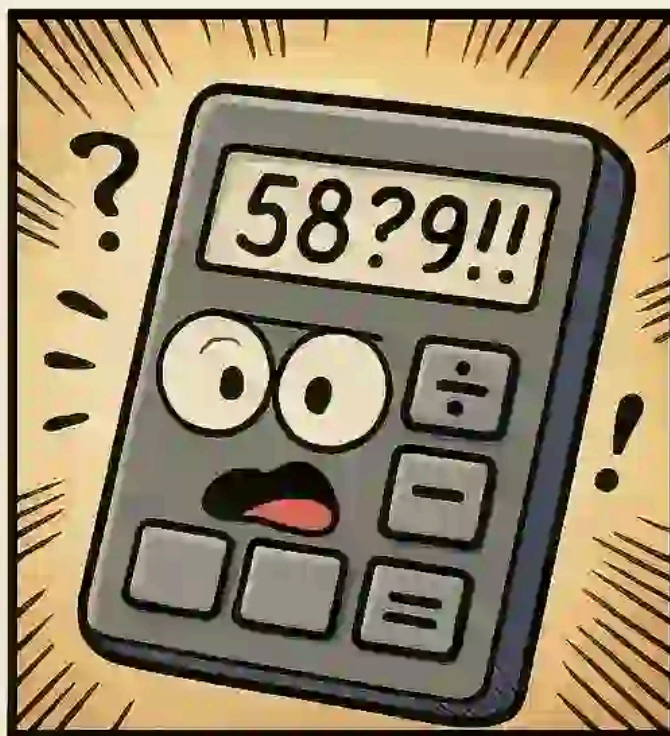
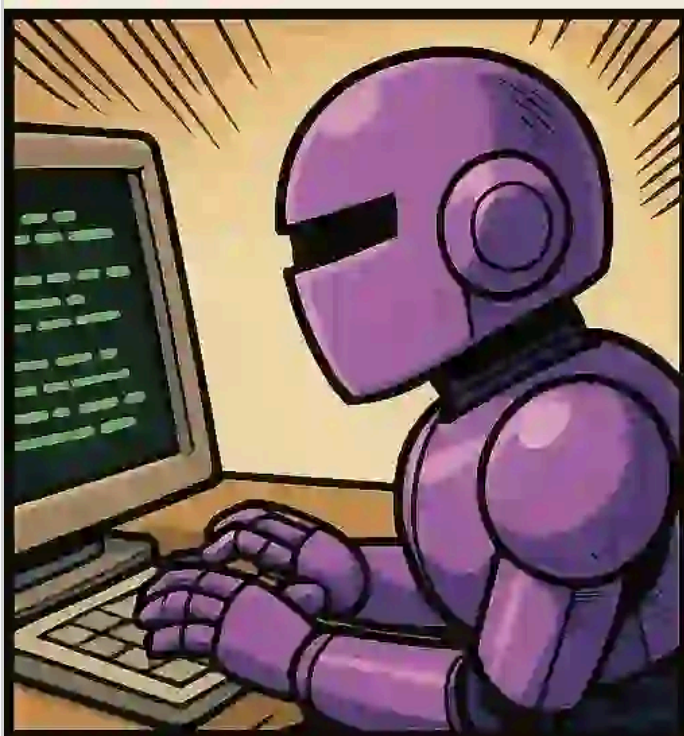
Don't build solutions for failures. Just await better models.



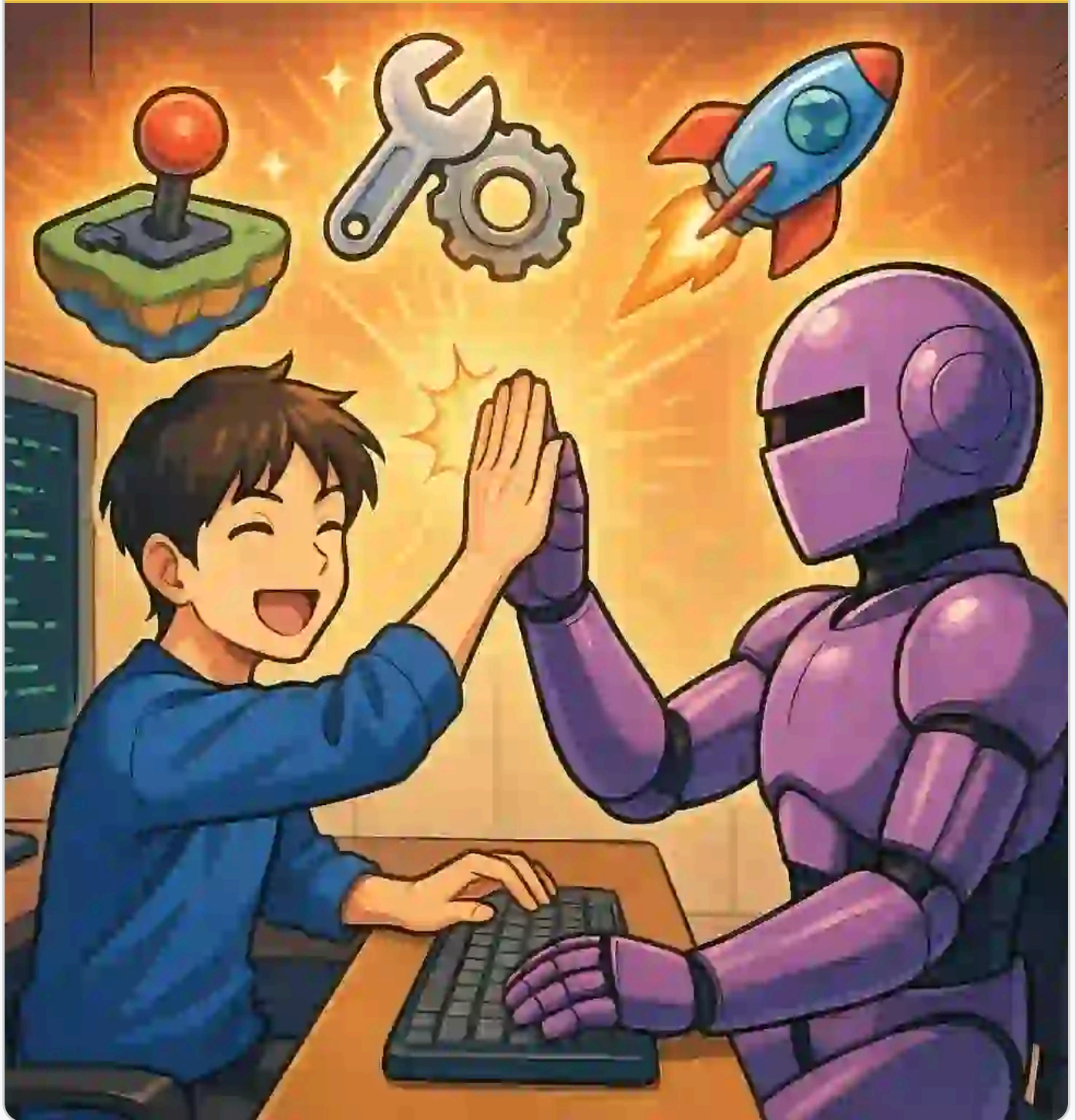
Give LLMs lots of context. Copy-paste files.
Use connectors, APIs, tools.



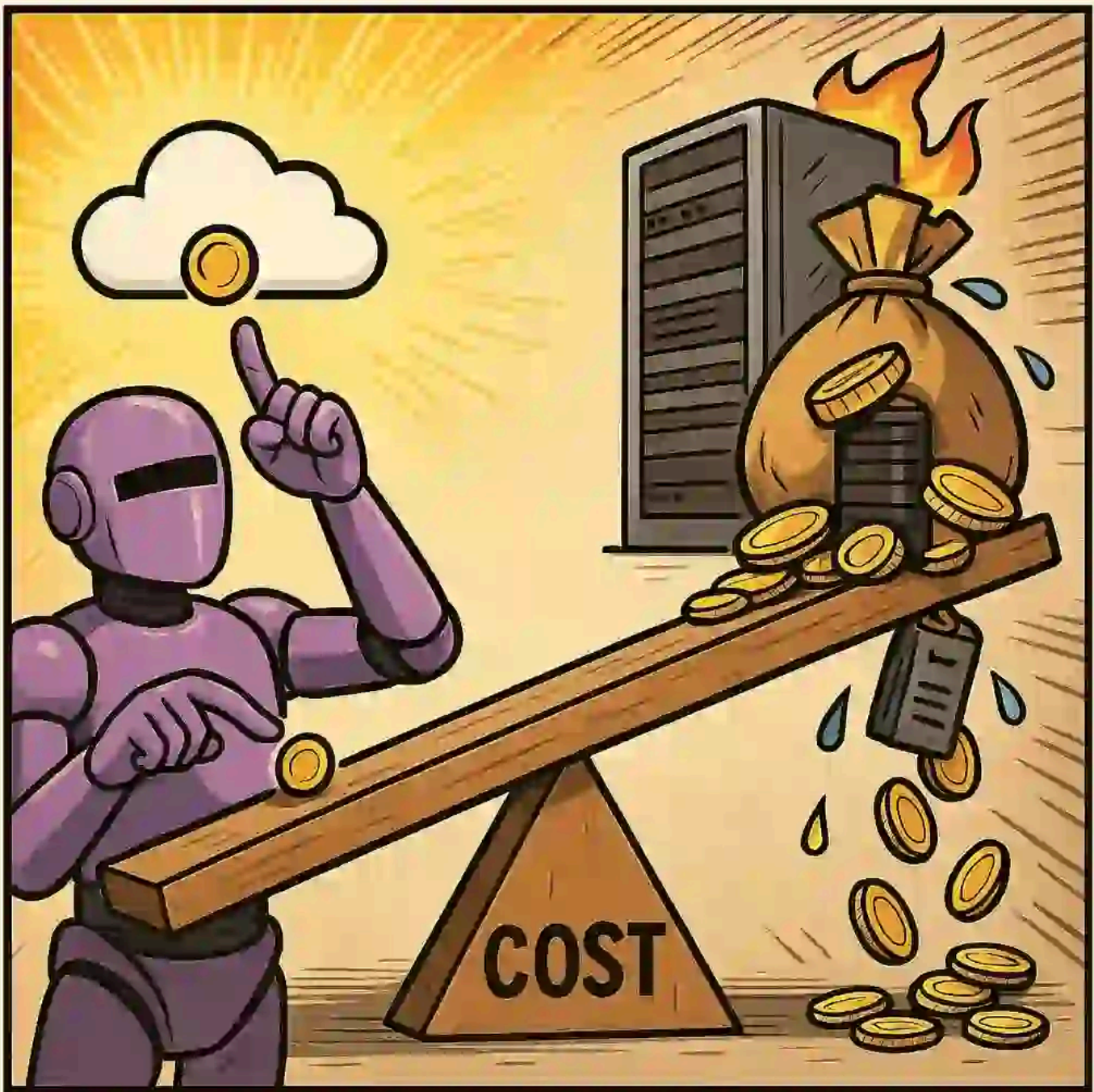
LLMs are good at code, bad at math. Have them write code to analyze.



Learn AI coding. Build a game, create personal tools, and publish.



APIs are cheaper than self hosting. Don't run your own models.



Datasets matter. Not custom models. You can fine-tune on new models any time.

